

Connecting a Metrologic MS9535 to a USB BT Adapter

I. Scope

This document will provide a brief description of how to connect the Metrologic MS9535 scanner to a USB BT adapter.

Note: Adapters differ from manufacturer to manufacturer. This document was based on an adapter from Widcomm and description may differ based on the manufacturer of the adapter you are using.

II. Getting Started

Observe USB dongle, install into USB on laptop.

Scan “Provide Service” bar code found in the I&U Guide.



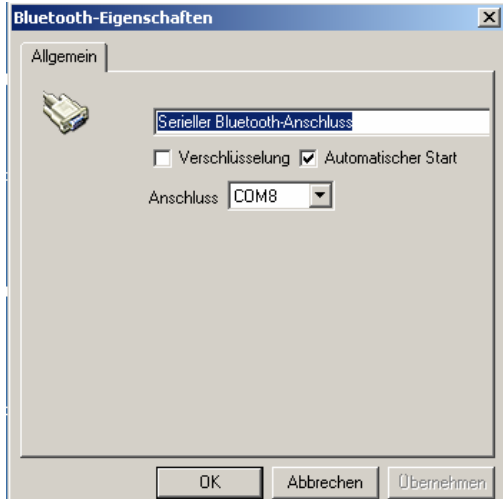
Click on



to open the USB dongle software.

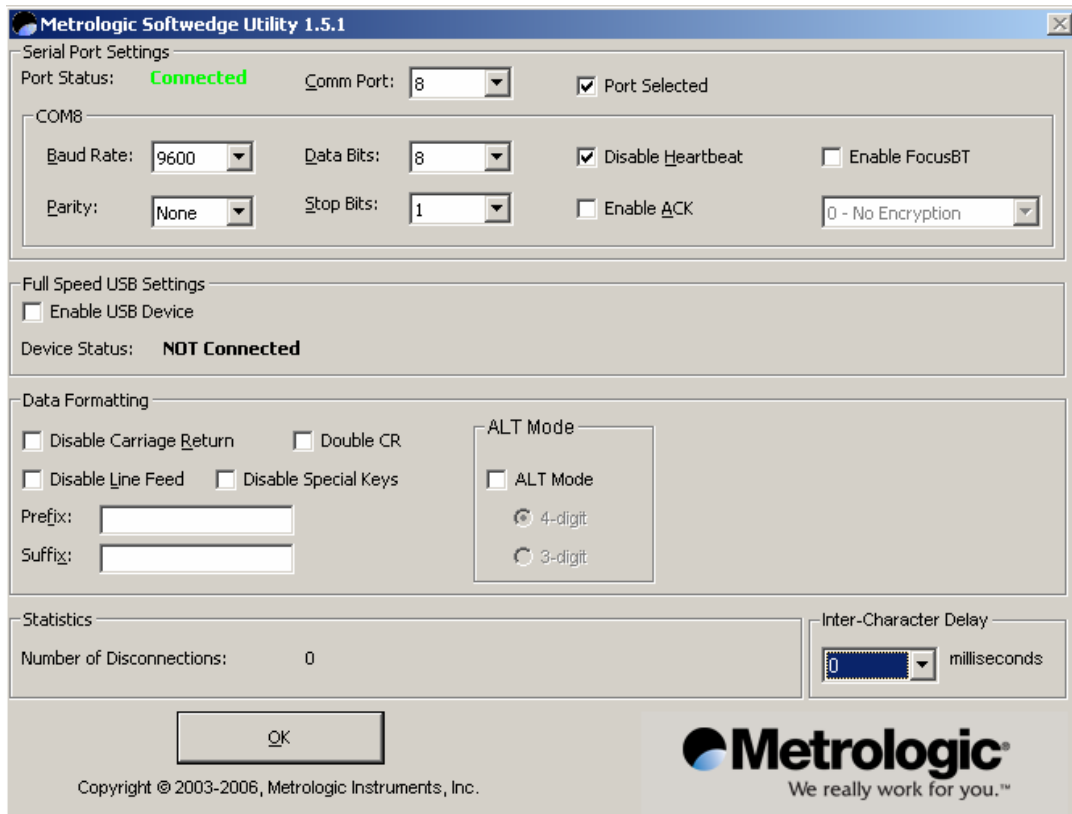
Select “Entire Bluetooth Neighbourhood” to begin searching for devices. Available devices will appear on the screen. Select the VoyagerBT scanner. Use the last 4 digits from Voyagers Serial Number as the key for the secure connection.

The Voyager BT scanner connects to the BT dongle via **SPP** profile. One virtual com port will be created where serial data from Voyager BT is available.



If your solution requires keyboard data, then use Metrologic's Softwedge. This software converts data from RS232 to keyboard buffer. You can use it not only for Voyager BT but for all serial scanners.

After you have installed Softwedge, start it, and select the virtual BT communication port. Select "Port Selected". The Port Status will change to "Connected".



Metrologic Software is available at:

<http://www.europe.metrologic.com/europe/engl/support/software/index.html>